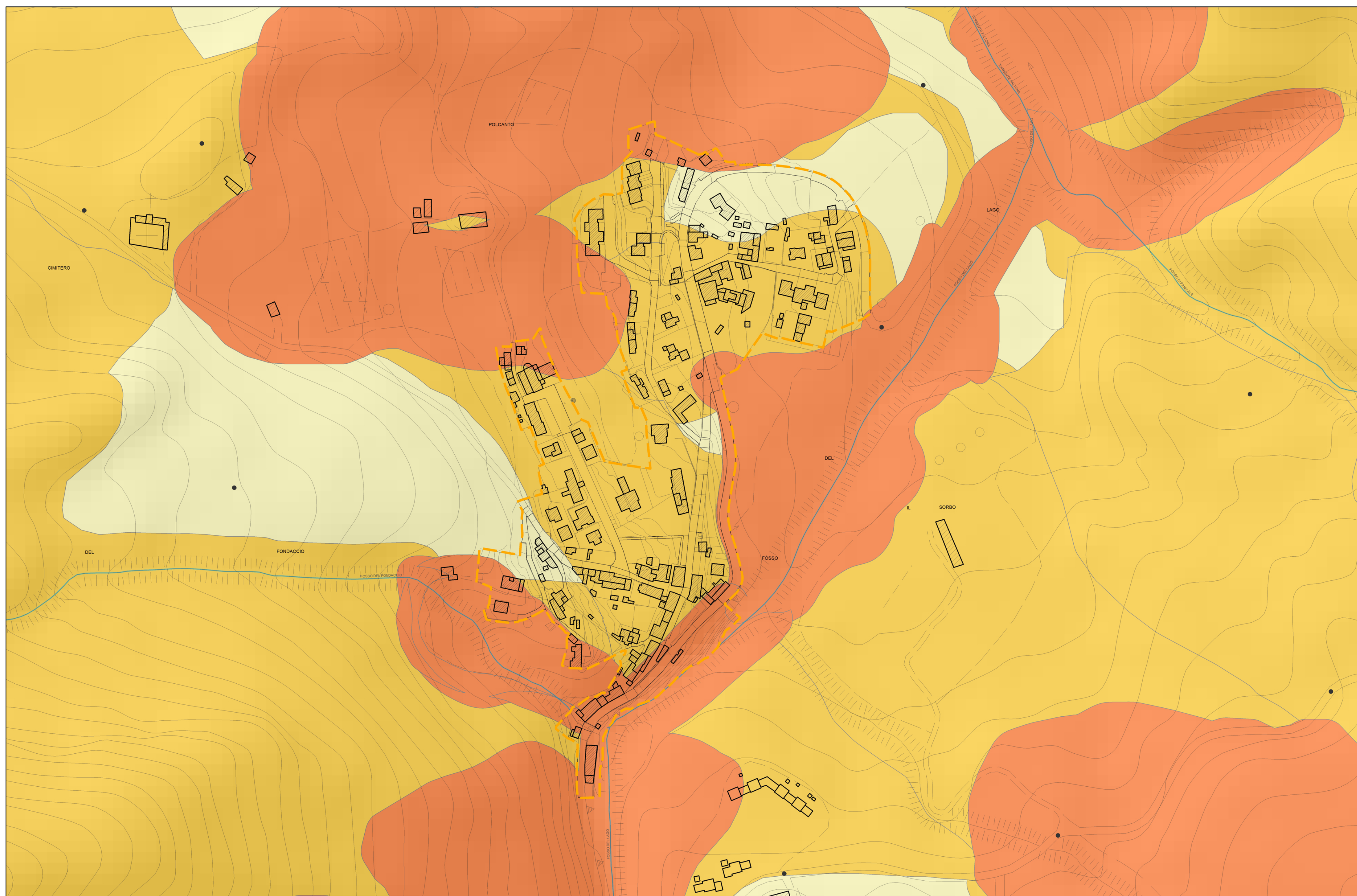




LEGENDA CARTA DELLA PERICOLOSITA' GEOLOGICA

- CONFINI COMUNALI
- - - PERIMETRO AREE URBANIZZATE E CENTRI ABITATI
- G2
- G3
- G3 *
- G4





REGOLAMENTO URBANISTICO COMUNALE
Comune di
BORGO SAN LORENZO




REGOLAMENTO URBANISTICO

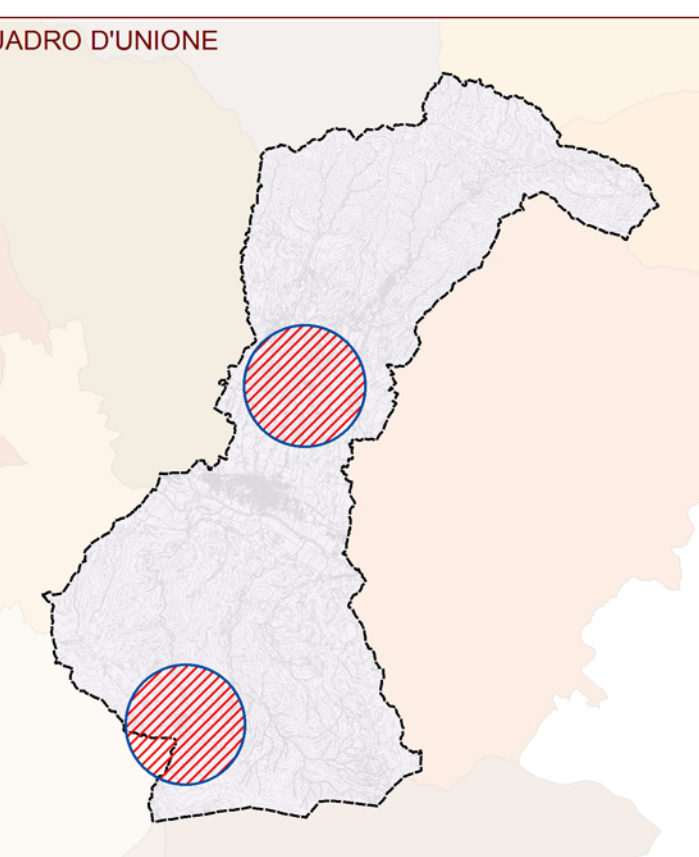
CARTA PERICOLOSITA' GEOLOGICA
PANICAGLIA - POLCANTO

TAVOLA
3 / 02
2016

scala: 1/2.000



QUADRO D'UNIONE



Sindaco e Assessore all'Urbanistica: **PAOLO OMOBONI**
Redattore: Ing. **EMANUELE GRAZZINI**

Indagini geologiche: Dott. **LUCIANO LAZZERI**
Collaboratrice: Dott.ssa **ELISA MARIANI**

Ufficio Piano Coordinatore: **Geom. Romano Chiocci**
Arch. **Elstratos Stavrakis**
Geom. **Nadia Martini**

Arch. **Sabrina Solito**
Gianna **Scheggi**
Paola **Buti**